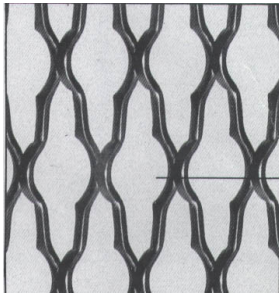
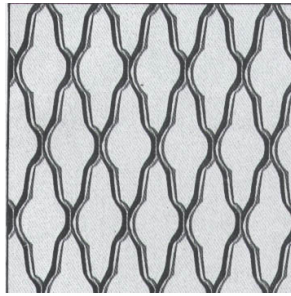


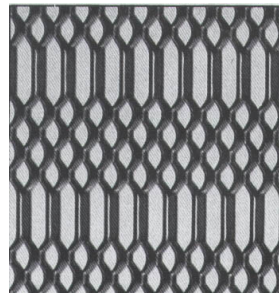
TOLES PERFOREES & DEPLOYEES ALU



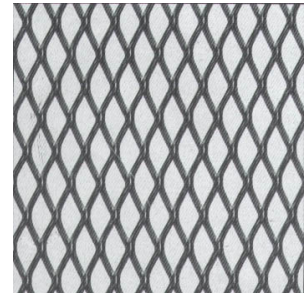
DECORATION
Code : 302720117 ARG
Code : 302720118 OR



D100
Code : 302720109 ARG
Code : 302720110 OR



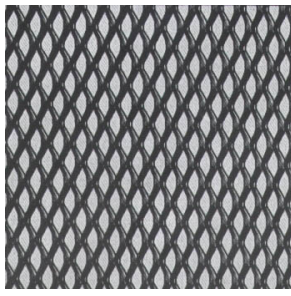
V120
Code : 302720113 ARG
Code : 302720114 OR



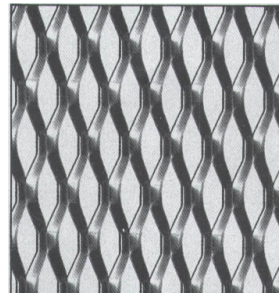
5 - 10 - 10
Code : 302720130 ARG
Code : 302720131 OR



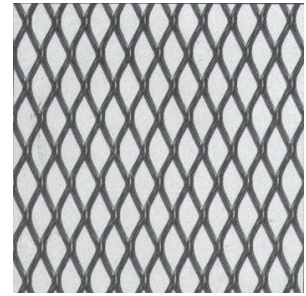
7 - 10 - 10
Code : 302720135 ARG
Code : 302720136 OR



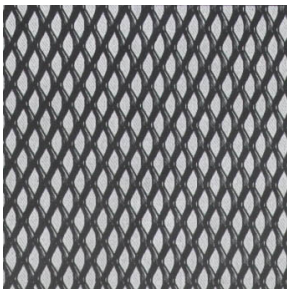
3 - 8 - 8
Code : 302720121 ARG
Code : 302720122 OR



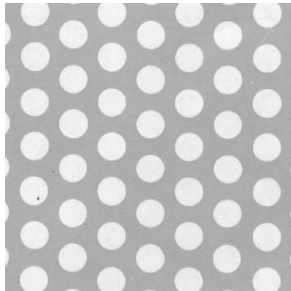
7 - 6 - 20
Code : 302720125 ARG
Code : 302720126 OR



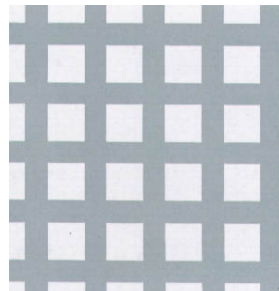
10 - 10 - 10
Code : 325620111
ACIER GALVA



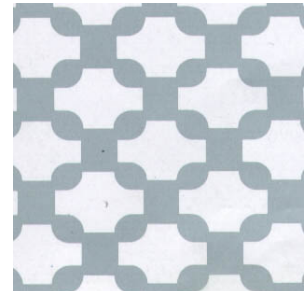
3 - 1 - 5
Code : 325610101
ACIER BRUT



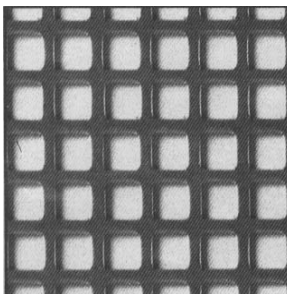
RD4 T8 ép 15/10
Perforation à 23%
Code : 302120102



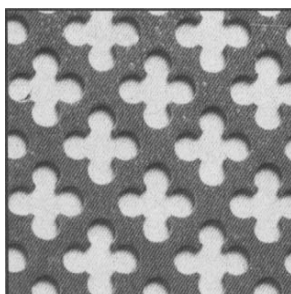
DEC 22 ép 10/10
Perforation à 39%
Code : 302320101



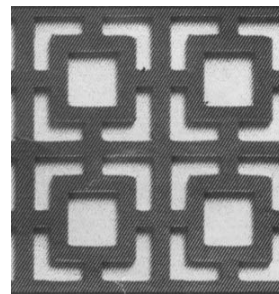
DEC 31 ép 10/10
Perforation à 62%
Code : 302320104



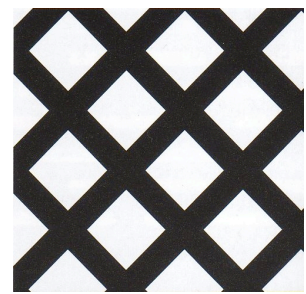
N°5 ép 8/10
Code : 302320111 ARG
Code : 302320109 OR



N°9 ép 8/10
Code : 302320113 ARG
Code : 302320110 OR



N°45 ép 10/10
Code : 302320112 ARG
Code : 302320108 OR



CD8 Z17 ép 15/10
Perforation à 44%
Code : 302120106

Format Standard 2000 x 1000 mm - Détaillée à la feuille ou 1/2 feuille
Plaques de tôles perforées tenues régulièrement en stocks



66 Rue de Turenne - 75003 PARIS
9 Rue de Poitou - 75003 PARIS
34 Rue Maurice gunsbourg - 94200 IVRY SUR SEINE
Tél : 01 46 72 34 00 - Fax : 01 45 15 23 76
www.weber-metaux.com - www.weber-metaux.info