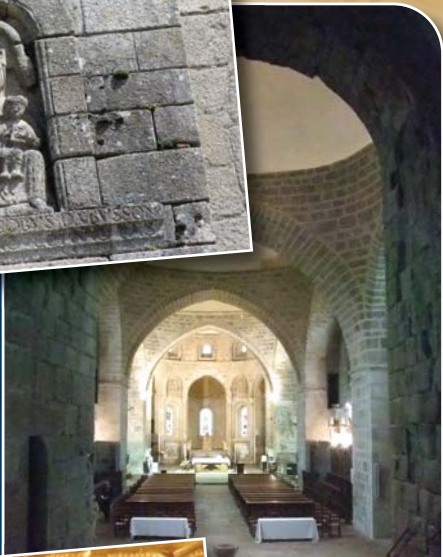
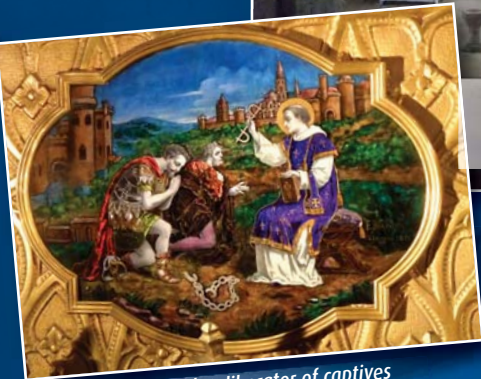




La Souterraine's Church: Our Lady 12 C.



Solignac: abbey founded by St Eloi in 632



St Léonard de Noblat: liberator of captives

Pilgrim's Prayer

"Lord Jesus, you who are the pilgrim's model, give us the means to walk in your footsteps along the ways of justice and truth, and to help those who struggle along the way. We thank you for the journey already travelled and ask you to come to meet us as you did that evening in the inn at Emmaus where you shared the bread of life and the cup of salvation. Lord, watch over the road we still have to travel through the Limousine on the way to Santiago de Compostella, and give us the courage to achieve this earthly pilgrimage.

We beseech you, Jesus-Christ, who lives and reigns with the Father and Holy Spirit for ever and ever, Amen."

P. Pierre MORIN

*Priest of the Diocese of Limoges
Pilgrim of the St James Way 2006.*

**If you wish pray with us
during a mass or an office,
please meet the celebrant before,
you will be welcome
and it will be a joy to pray together.**

A word of welcome from the Bishop of Limoges

Dear pilgrims,

We often travel, for work, studies, leisure. But do we take the time to appreciate the travelling? In today's busy life (these words in themselves intimate haste), we are always in a hurry. As soon as we leave we want to have arrived. Only the end is important, we don't pay any attention to the actual moving.

Santiago de Compostela is a destination, but first of all it's an itinerary. Over months or weeks, every day is a step forward. The pilgrimage makes us live at a different pace, in tune with our bodies, up to the limit of our strength, physical as well spiritual.

Forces which have to continually renew. At each stage, we have to find sustenance and rest. We have to return to the source of our profound motivation, our search of the absolute.

This booklet is for those who walk and seek, to facilitate human, cultural and spiritual encounters. It contains suggestions for pilgrims taking "Via Lemovicencis", from the point they enter the diocese of Limoges.

To everyone, it offers places of welcome which are also places of beauty, silence and peace. For those who wish, it offers places to pray, for the celebration of the Eucharist, or time for listening and reconciliation; places for meeting with Christian communities who, in turn, gain much from meeting those who visit them.

Dear Pilgrims, Welcome to Limousin!

My prayers go with you.

+ François KALIST, Evêque de Limoges



Following the Way of SANTIAGO DE COMPOSTELA through the Limousin

2012



Stained glass window in La Souterraine's church

Spiritual stops in the Creuse and Haute Vienne on the road to Santiago de Compostela coming from Vézelay.



Chemin de Creuse : 107,4 et 95,8
Chemin de Haute-Vienne : 99,6



Pastorale du Tourisme, Diocese of Limoges
prtldiocesdelimoges@gmail.com

SPIRITUAL STOPS ON THE WAY TO **SAN JAMES OF COMPOSTELLA** WITHIN THE DIOCESE OF LIMOGES (CREUSE AND HAUTE VIENNE)

1 CROZANT

XII - XV C church

Near the church, at the Laberthonniere grocery (épicerie), open 7 days/wk : Pilgrim's stamp (sceau pour la crédentiale or pilgrim's passeport) available **05 55 89 80 10**.

2 La Chapelle-Baloue

XIII - XV C church: wall paintings XIX C.

Ask the opening at the proximate grocery.

3 Saint Germain-Beaupré

Church XII and XVIII C, key at the Town Hall (Mairie).

4 Saint Agnant de Versillat

Church XII C, open same hours as the Town Hall (Mairie).
Lanterne des morts (Lantern of the Dead) in the cemetery.

5 LA SOUTERRAINE

Our Lady Church XI - XIX C, Mass: Sun. 11.00hr

Gallo-roman and romanesque crypt open p.m. in July and August, St James Vitral in the south transept

Parish stamp (for credential) at entrance to the church, contact Max Rouvet (06 31 77 65 89).

Presbytery 1 Place Emile Parrain, **05 55 63 05 66**: Mass during the week: Mon., Wed., Fri.: 18.15hr; Tues., Thurs.: 11.00hr.

Lanterne of the Dead at cemetery.

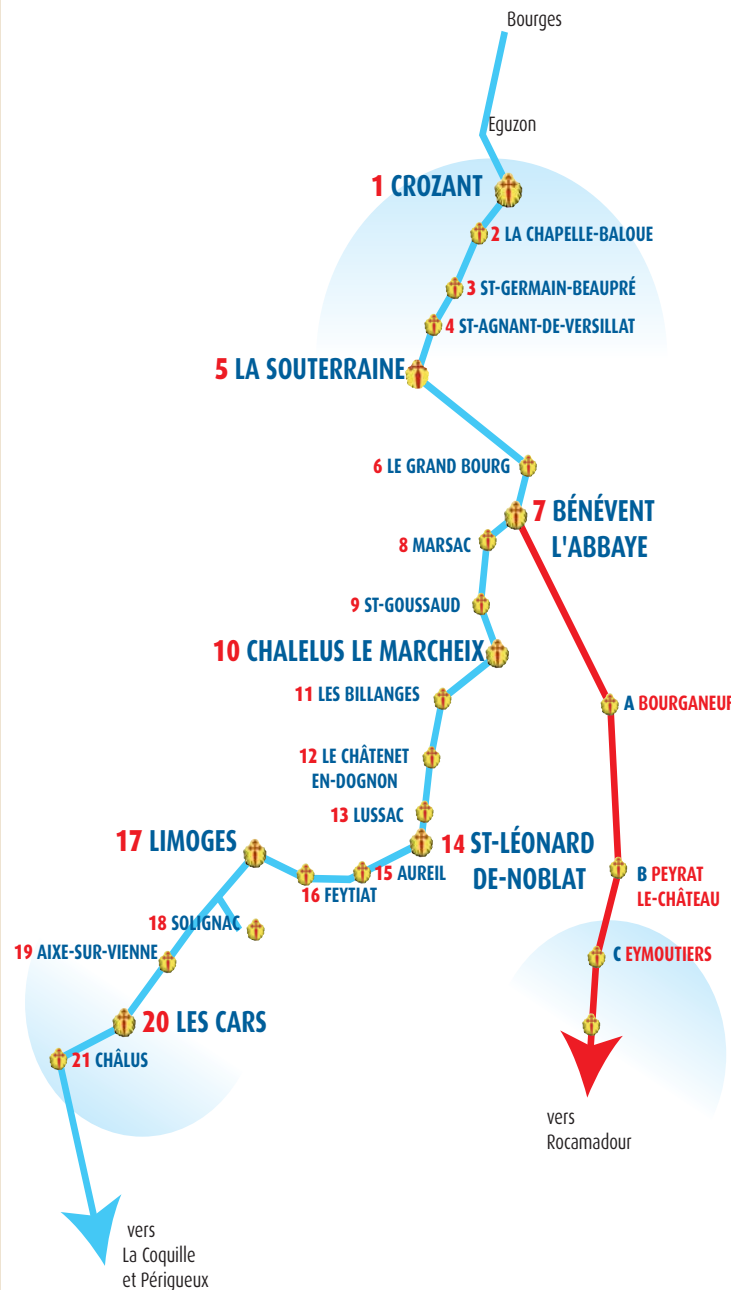
6 Le Grand-Bourg (3 Km from the Pilgrim Way)

XIII C Gothic Collegial church, mass 19.00hr 3rd Sat./month.

7 BÉNÉVENT L'ABBAYE

XI C church St Barthelemy, mass 19.00hr 1st Sat./month.

Convent of Sisters: 11 rue du Marché, Service at 17.30hr, parish stamp for credential, mass: Wed. 18.00hr.



8 Marsac

Chapel Our Lady of Rorgues XV C. (Notre Dame des Rorgues), exit of Marsac, can be visited every day, contact **05 55 62 66 96**

Chapelle de Reix XVI C: out of the way (4Km from Arrènes): to visit contact **05 55 62 63 39**.

9 Saint Goussaud

Church. XII C.

Parish stamp from Mr & Mrs Chatain, opposite the church. **05 55 64 32 66**.

Lanterne of the Dead (Lanterne des Morts).

10 CHÂTELUS LE MARCHEIX

XIV C church, Mass 2nd Sat./month at 18.00hr.

11 Les Billanges

XII C church, mass 3rd Sat./month 18.00hr.

Contact: Edith Monier **05 55 56 50 72**.

12 Le Châtenet-en-Dognon : XV C church open.

13 Lussac : (3Km before St Leonard de Noblat) :

Jean XIII Spiritual Center: Pilgrim Reception at the Limoges Diocesan House, **05 55 56 04 63**,

convent of the Augustine Sisters of Our Lady of Paris: mass: Mon., Fri.: 11.30hr; Lauds 8.00hr, Vespers 18.00hr.

14 ST LÉONARD DE NOBLAT

Collegiate church open.

Mass: Sun.: 10.30hr; Tues., Wed., Thurs., Fri.: 11.00hr.

15 Aureil : Church always open.

16 Feytiat

XII C church always open.

Mass: Sun.: 10.00hr; Wed.: 18.00: Mass and Vespers.

17 LIMOGES

Franciscan Sisters at 1 Place de l' Evêché, **05 55 05 02 48**:

welcome after 16.30hr ,
fraternity offices: Lauds: 7.30hr and Vespers: 18.30hr.

Diocesan House (15 Rue Eugène Varlin) **05 55 30 39 79**:
chapel open from 7.00hr, mass every day 9h.

Cathedral: guided visits every day except Sun a.m.

Duty personnel available every a.m. **05 55 33 12 51**.

Mass: Wed. 18.00hr, Fri. 18.00hr, Sun. 19.00hr.

Ste Marie Church: mass Mon. & Thurs. 11.15hr; Sat. 18.30hr, Sun. 11.00hr.

St Peter (église St Pierre): Mon., Wed., Thurs., Fri.: 18.30hr;
Sat.: 19.00hr; Sun.: 10.30hr.

Franciscan Brothers Chapel (8 rue Charles Gide): mass every day 8hr.

18 Solignac : (South of Limoges)

Abbey church always open. Mass: Sun. 11.00hr, Fri. 11.00hr.

Parish office: **05 55 06 94 98**, presbytery: **05 55 00 50 28**.

19 Aixe/Vienne : XIII C church open 08.00hr - 20.00 hr.

Mass Mon., Wed.: 18.30hr; Fri.: 9.30hr, Sun.: 10.30hr.

20 LES CARS : XII C church.

21 Châlus : : XIX C. church, open the day.

BENEVENT – ROCAMADOUR WAY

A Bourgneuf

Church of the Hospitaliers XII C: open 08.00hr - 20.00hr. Mass Sun. 11.00hr.

Presbytery (stamp for credential): mess in the oratory, Tues. Thur.: 18.30hr.

Convent sisters (20 Ave de la République) : prayer Wed. 18.30hr.

B Peyrat-le-Château : Church open 7.00 to 19.00 hr.

Mass July and Aug.: Sun 10.30hr.

C Eymoutiers : Collegiate Church open 7.00 - 19.00hr, Mass Sun.: 10.30.

Presbytery (2 rue des Penitents), 05 55 69 11 22, weekdays mass 8.30hr.

2012: great celebration of Millennium of the Collegiate Church. Special jubilee for the St James pilgrims on September 15 and 16.