

News from Boundou

Newsletter of the Boundou Community Nature Reserve

Before the rain

Written by the CORENA – Association of the Boundou CNR

Edito

by Hubert Ndeye, General Secretary of the Region of Tambacounda, Executive Secretary of CORENA



At the end of the school year, education was praised in the CNR of Boundou, particularly in elementary schools around the reserve nature clubs and school gatherings. Last June, during the annual meeting of the teachers of Co-Codec of Boundou, the Inspector of Schools did us the honor of officially handing over 250 copies of the book "The Journey of Lella" schools of Boundou, fruit of their work with the association Borée. But the involvement of the reservation in education goes well beyond that, up to university level through various studies conducted by Masters Students, including two Senegalese in the ISE in Dakar.

It is for us, the local authorities of the CNR, a pride that drives us to continue our efforts in the organization of the reserve. The Regional Council of Tambacounda today, proves its strong commitment by providing CORENA with offices for future officials of the reserve. We also thank our partners who are with us since the beginning, as well as newcomers like GRDR, who with CORENA just signed a partnership agreement.

First results of the study about flowers

On the 14th of June 2012 in Tambacounda, there was a workshop showing the feedback from the studies of the two Masters 2 students, at the ISE of Dakar (UCAD).



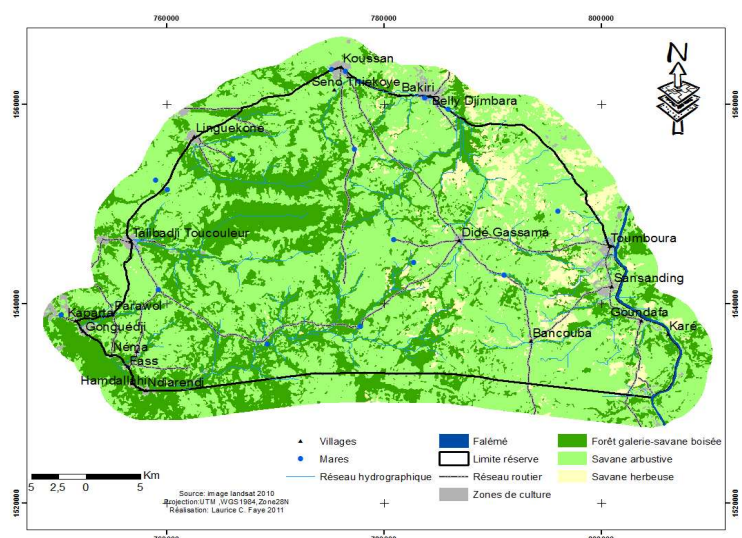
In the presence of the Director of the Institute of Environmental Sciences (ISE) of the University Cheikh Anta Diop in Dakar, Mr. Bienvenu Sambou, and Professor Assane Goudiaby, both students Laurice Codou Faye and Francis Gomis presented the first results of their studies on mapping of land use and inventory of woody vegetation. Initiated in 2011, these studies were designed to define the different types of vegetation present in the RNC of Boundou and the component plant species, the reserve had no recent data on the local flora.

Thus, four types of land have been identified (see map), which have evolved over the last 30 years: after the droughts of the 1980s, it seems that the woodland will be further developed in low lying areas, and cultivated areas, but only to a lesser extent around villages. However, there is predominance in all zones of *Combretum glutinosum*, a shrub that requires very little and that rapidly colonizes poor land. It is feared that many useful species threatened by bush fires, logging and over exploited, will gradually disappear from the area without specific protection being put in place.

Woody species threatened or in a "difficult situation" ...

Of the 108 woody plant species identified in the savanna areas, 42 appear in a difficult situation and for various reasons: their low natural regeneration, their surroundings degraded, or their confinement to specific sites. An example is the baobab (*Adansonia digitata*) which seems to have very little natural regeneration in the area even though it is a useful species to the populations and whose fruits are widely consumed locally.

The mbep (*Sterculia setigera*), jujubier (*Ziziphus mauritiana*), the véne (*Pterocarpus erinaceus*), the Dimb (*Cordyla pinnata*) and many other useful species are certainly in the same situation.



Map of land cover and use in 2010, using Landsat. (L. Faye).

Dark Green: Woodland.

Light green: Savanna Scrublands.

Light Yellow: Grassy savannas.

Grey: Agricultural surfaces.

The CNR in numbers

183 The number of fires detected in the CNR during the dry season 2011-2012

42 The number of species deemed to be under threat in a difficult situation

2 The number of camera traps soon to be installed

An account for the support funds of the CNR

Slowly but surely, the support funds for the economic initiatives of the CNR of Boundou are organised. The 9th June back, during the Constitutional General Assembly, for the support funds, the local management committees put in place: a **Credit Committee** (charged with attributing funds & reimbursement of the credits) & a **Monitoring Committee** (to oversee the smooth running of activities).



On top of that, the members of the office (photo above) have recently opened an account at the Crédit Mutuel in Goudiry, to house an initial fund (with the support of the PNR of Millevaches in the Limousin & of the GRDR) and to permit the support of the first files between now and the next meeting. Thus, the poultry farmers of the GIE Bantaare Sisse ni Kamo & the beekeepers of the GIE Limbam Boundou will be the first to benefit from those funds. Depending on other actors, notably the women, they will have in the long term, access to the funds when they are organised into associations or recognized groups.

In the villages ...

RC OF TOUMBOURA

- Provision of a millet mill to Bancouba

Partner : PNDL

RC OF KOUSSAN & DOUGUE

- Construction of 2 toilet blocks in each of the schools of Fass, Koussan, Talibadji and Linguekone

Partner : State (PEQT2)

INTERCOMMUNITY

- Work begins on the laying of a lateritic track in the axis. "Kipou Siley-Koussan-Didé"

Partner : State

A henhouse for the school of Goundafa

After the farmers of the reserve, it is the turn of Goundafa students to embark on raising Guinea Fowl. An initiative from their teacher, Babacar Diouf, and with the support of other farmers of the GIE Bantaare Sisse ni Kamo and of the PNR of Millevaches in the Limousin, the students of CM2 and of CI have constructed the first school henhouse of the CNR. They will soon welcome their first three Guinea Fowl from farms in the CNR.

Thus, every student will participate in the monitoring of the flock, the feeding, and maintenance of the premises and the sales of the Guinea Fowl. The revenue from that activity will enable the school to buy school supplies for its' students in greatest need, or to complete the school canteen.

Besides the financial gain, this activity is also a means to develop the livestock experience of the children and give them ideas for their future wellbeing. In fact, not everyone will have the chance (or desire) to follow their education away from the village. We wish them Good Luck, and we hope that other schools will be inspired by their experiences !



The students of the primary school of Goundafa in front of their coop.

Soon...



August 2012

Abdoulaye Kante, leader of the CORENA guard, will be hosted by the PNR of Vercors & the General Council of Isère for a course on the craft of "custody of a natural reserve", the 17th to 24th August 2012.



Boundou Community Nature Reserve

A project of the rural communities of Dougué, Koussan, Sinthiou Fissa and Toumboura, and of the Group of communal interests of Bakel.

In the framework of the partnership ISERE-TAMBACOUNDA, with the support of the ARD, the technical departments, projects and programs of the Region, and the support of the FFEM, the AFD and the CF-UICN.



CONTACTS :

CORENA

Association of the Boundou CNR
Koussan, BP 238 – Tambacounda, SENEGAL
corena.tamba@hotmail.com

Hubert Ndeye – *Secrétaire exécutif*
(00 221) 77 524 14 76

ARD of Tambacounda – Office of Bakel
Mamadou Fade – *Chief of the office*
(00 221) 77 511 51 26
fademamadou@yahoo.fr



Parc National du Niokolo Koba

Académie de Tambacounda



Contributions : H. Ndeye (CR Tamba) – M. Fade (ARD Bakel) – B. Diallo (Isère)
Photo / Conception / Editing : C. Clément-Seck - Translation: Colvin Tooke