



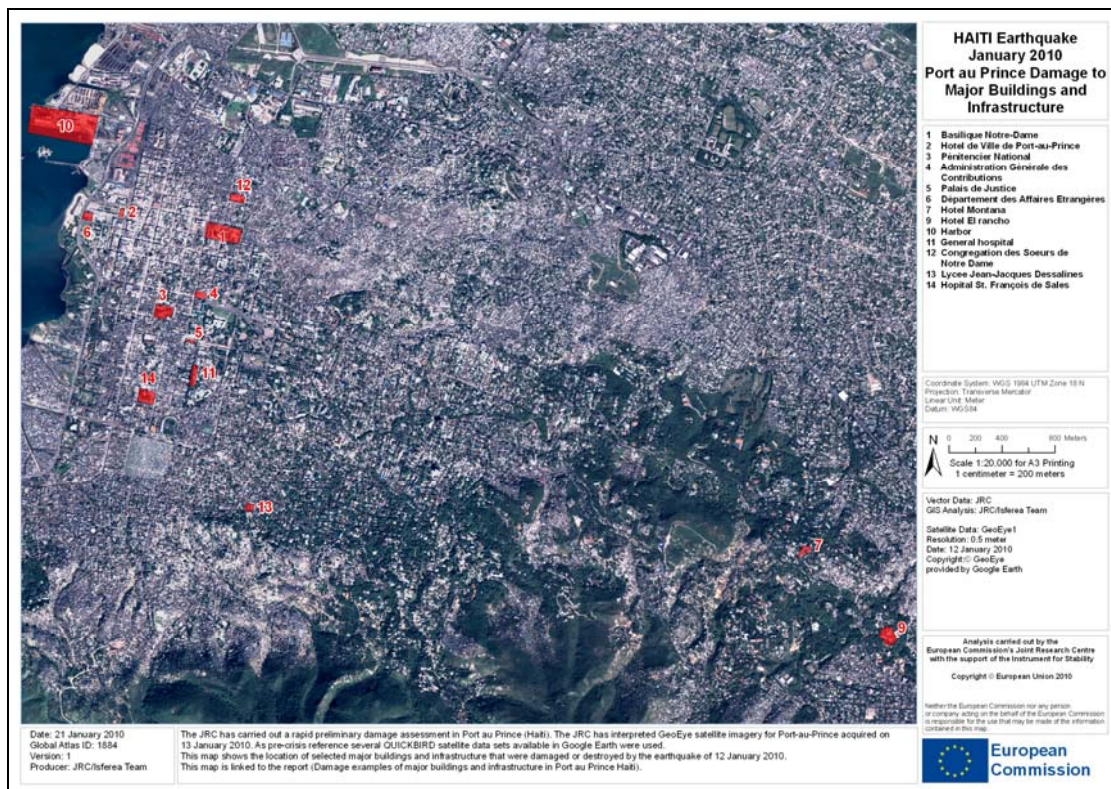
EUROPEAN COMMISSION  
JOINT RESEARCH CENTRE  
Institute for the Protection and Security of the  
Citizen  
Support to External Security Unit - ISEFEREA

## Haiti – Port-au-Prince

# Damage examples of major buildings and infrastructure in Port au Prince – Haiti

*JRC assessment of damage caused by the earthquake of 12 January 2010*

Version 1 – 21<sup>st</sup> January 2010



## Background

This report shows examples of the damages and destructions that occurred to major buildings (ministries, public facilities) and infrastructure (harbour) after the earthquake of 12 January 2010.

The examples are based on NOAA aerial photos from the 17<sup>th</sup> and 18<sup>th</sup> of January 2010 and GeoEye data from the 26 August 2009.

These following examples are not exhaustive, but are meant to give an idea of the magnitude of damage.



26 August 2009-  
4-Administration Générale des  
Contributions



NOAA aerial photo(17-18 January 2010)  
4 -Administration Générale des  
Contributions



26 August 2009  
Palais des ministères



NOAA aerial photo(17-18 January 2010)  
Palais des ministères





26 August 2009  
7 -Hotel Montana



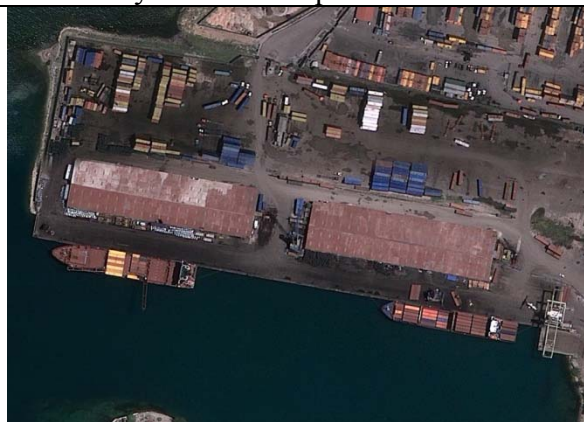
NOAA aerial photo(17-18 january 2010)  
7-Hotel Montana



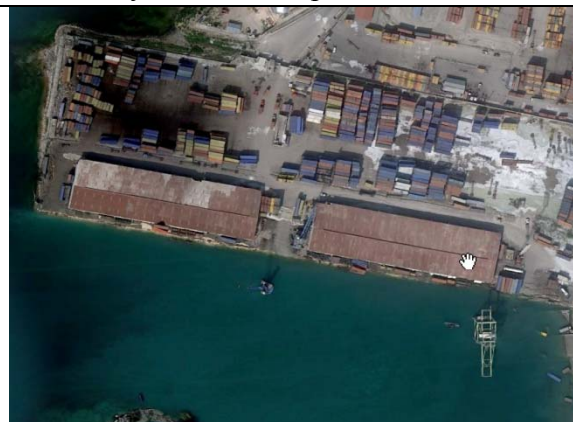
26 August 2009  
13-Lycée Jean Jacques Dessalines



NOAA aerial photo (17-18 january 2010)  
13-Lycée Jean Jacques Dessalines



26 august 2009  
10-Infrastructure portuaire



NOAA Aerial photo(17-18 january 2010)  
10-Infrastructure portuaire



26 august 2009  
**9-Hotel El rancho**



NOAA aerial photo(17-18 january 2010)  
**9-Hotel El Rancho**



26 august 2009  
**12-Congrégation des Soeurs de Notre Dame**



NOAA aerial photo(17-18 january 2010)  
**12-Congrégation des Soeurs de Notre Dame**





26 August 2009  
11-Hopital général



NOAA aerial photo(17-18 january 2010)  
11- Hopital général



26 august 2009  
5-Palais de Justice



NOAA aerial photo(17-18 january 2010)  
5- Palais de Justice



26 august 2009  
3- Pénitencier national



NOAA aerial photo(17-18 january 2010)  
3- Pénitencier national



26 August 2009  
1 Basilique Notre dame and Lycee Petion



GeoEye 13 january 2009  
Cathedrale and Lycee Petion



26 August 2009  
2-Hotel de Ville



NOAA aerial photo(17-18 january 2010)  
2- Hotel de villel





26 August 2009  
6-Département des Affaires Etrangères



NOAA aerial photo(17-18 January 2010)  
6- Département des Affaires Etrangères



26 august 2009  
14-Hopital St François de sales



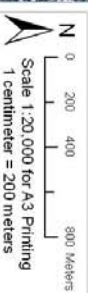
NOAA aerial photo(17-18 January 2010)  
14-Hopital St François de sales



# HAITI Earthquake January 2010 Port au Prince Damage to Major Buildings and Infrastructure

- 1 Basilique Notre-Dame
- 2 Hotel de Ville de Port-au-Prince
- 3 Penitencier National
- 4 Administrations Generale des Contributions
- 5 Palais de Justice
- 6 Departement des Affaires Etrangeres
- 7 Hotel Montana
- 9 Hotel El Rancho
- 10 Harbor
- 11 General hospital
- 12 Congregation des Soeurs de Notre Dame
- 13 Lycee Jean-Jacques Dessalines
- 14 Hopital St. Francois de Sales

Coordinate System: WGS 1984 UTM Zone 18 N  
 Location: Transverse Mercator  
 Datum: WGS84



Vector Data: JRC  
 GIS Analysts: JRC/Isleria Team  
 Satellite Data: GeoEye/1  
 Resolution: 0.5 meter  
 Date: 12 January 2010  
 Copyright: GeoEye  
 Provided by: Google Earth

Neither the European Commission nor any person or company acting on the behalf of the European Commission is responsible for the use that may be made of the information contained in this map.



Date: 21 January 2010  
 Global Atlas ID: 1884  
 Version: 1  
 Producer: JRC/Isleria Team

The JRC has carried out a rapid preliminary damage assessment in Port au Prince (Haiti). The JRC has interpreted GeoEye satellite imagery for Port-au-Prince acquired on 13 January 2010. As pre-crisis reference several QUICKBIRD satellite data sets available in Google Earth were used. This map shows the location of selected major buildings and infrastructure that were damaged or destroyed by the earthquake of 12 January 2010. This map is linked to the report (Damage examples of major buildings and infrastructure in Port au Prince Haiti).