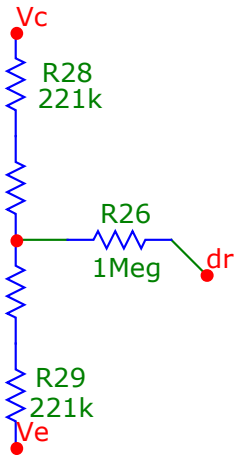


Pot Offset

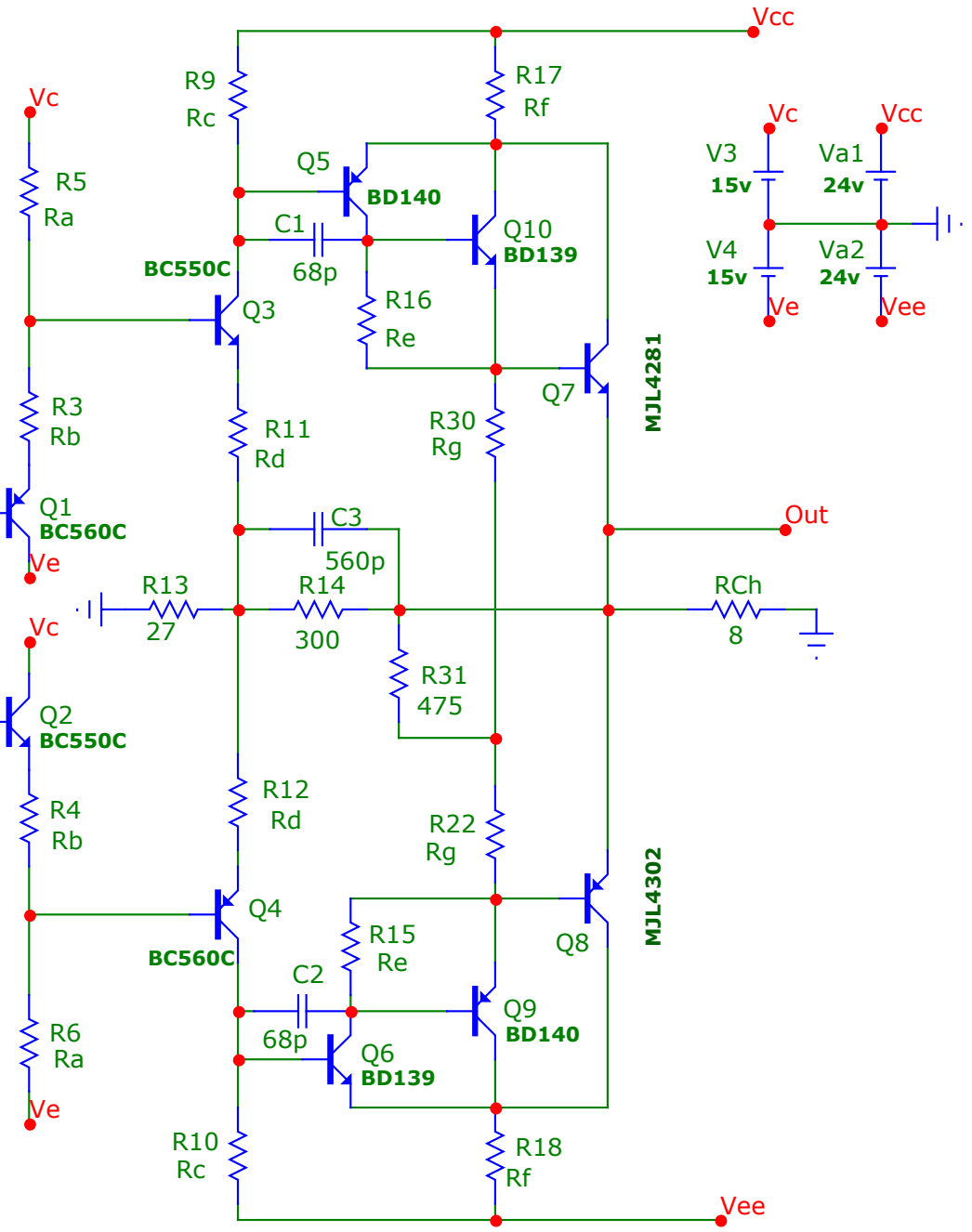
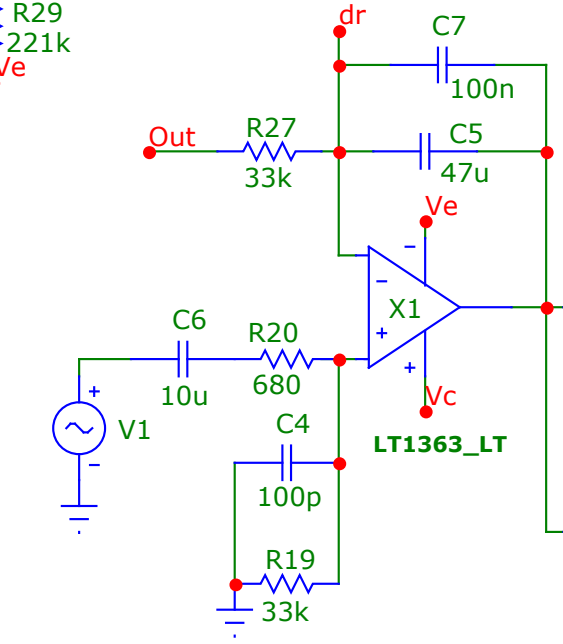


```

.define Ra 18.1k
.define Rb 180
.define Rc 1.4k
.define Rd 180
.define Re 475
.define Rf 0.33
.define Rg 100

.define P 10k
.define a 0.7

```



Output Expression =v(Out)
 Input Source Name =V1
 Transfer Function =0
 Input Impedance =inf
 Output Impedance =5.2519e-006