

By
Pauline
Rosenberger

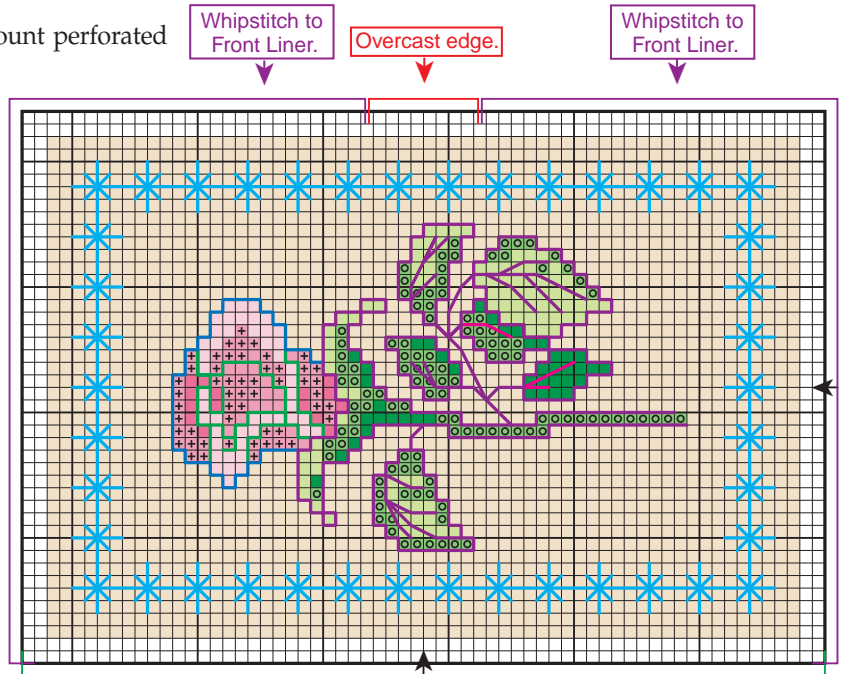
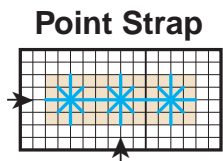
VICTORIAN KEEPSAKE

MATERIALS:

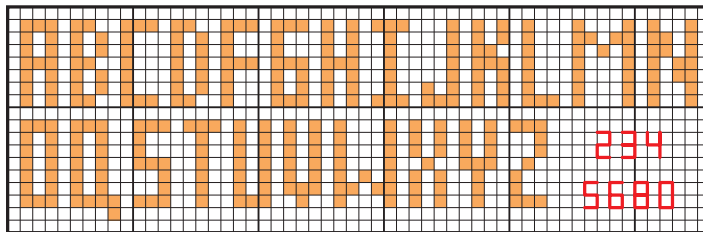
One sheet of clear 14-count perforated plastic
Scrap of ecru muslin
 $\frac{2}{3}$ yd. peach $\frac{1}{4}$ " satin ribbon
Craft batting
Velcro®

INSTRUCTIONS:

NOTES: From perforated plastic, cut four pieces 41 x 61 holes for Front, Front Liner, Back and Back Liner, two pieces 5 x 61 for Spine and Spine Liner, one piece 5 x 19 for Handle Strap and one piece 5 x 13 for Point Strap.



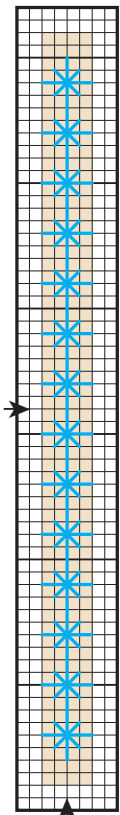
Alphabet & Numbers



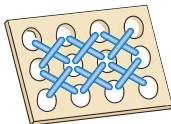
Whipstitch to Spine.

Whipstitch to Spine.

Spine/Liner

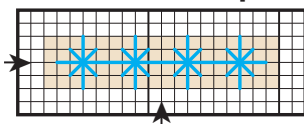


Perforated Plastic Cutting Illustration

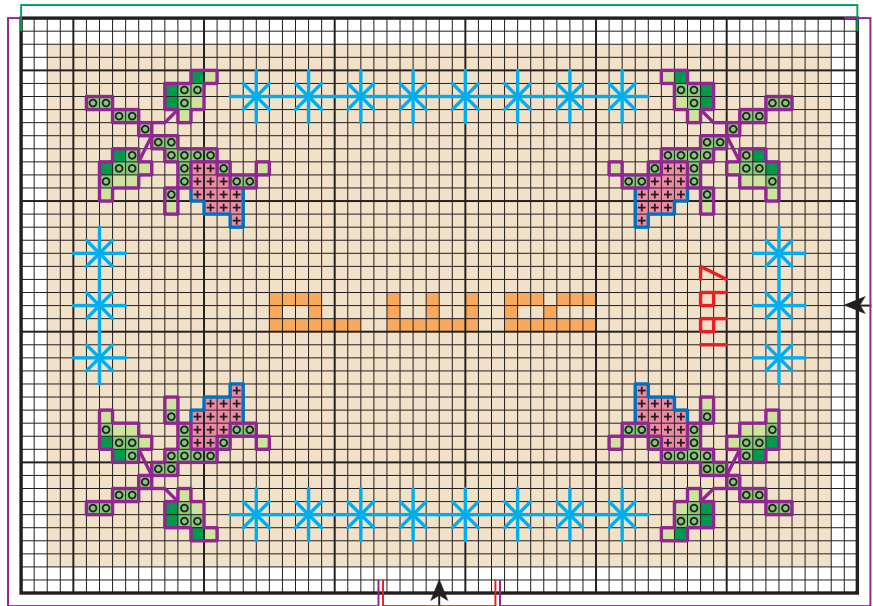


When cutting perforated plastic, cut on outside edge of bar preceding first stitch.

Handle Strap



Back



Whipstitch to Back Liner.

Overcast edge.

Whipstitch to Back Liner.



1: Selecting letters and numbers of choice from Alphabet & Numbers Graph, center and stitch designs, using two strands floss or one strand braid for Cross-Stitch and Backstitch of leaf stems. Use six strands floss for Extended Smyrna Stitch, Overcast and Whipstitch (see illustrations). Use one strand floss or braid for remaining Backstitch.

NOTE: From Velcro pieces, cut one each 5/16" square piece.

2: Using ecru floss, Overcast long edges of Point Strap and long edges and one short edge of Handle Strap. Sew wrong side of one Velcro piece to Back Liner as indicated on graph and wrong side of remaining Velcro piece to wrong side on finished end of Handle Strap. Whipstitch short unfinished edges of Point Strap and Handle Strap to Back Liner as indicated.

NOTES: From batting, cut one 1 5/8" x 2 3/8" piece. From muslin, cut one 2 1/8" x 2 7/8" piece.

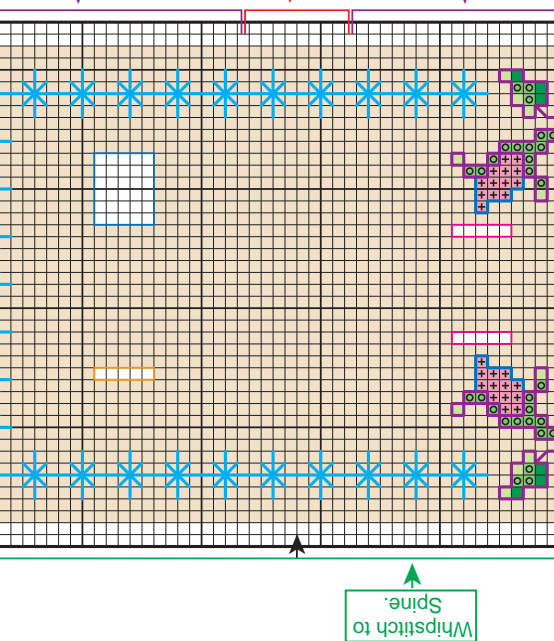
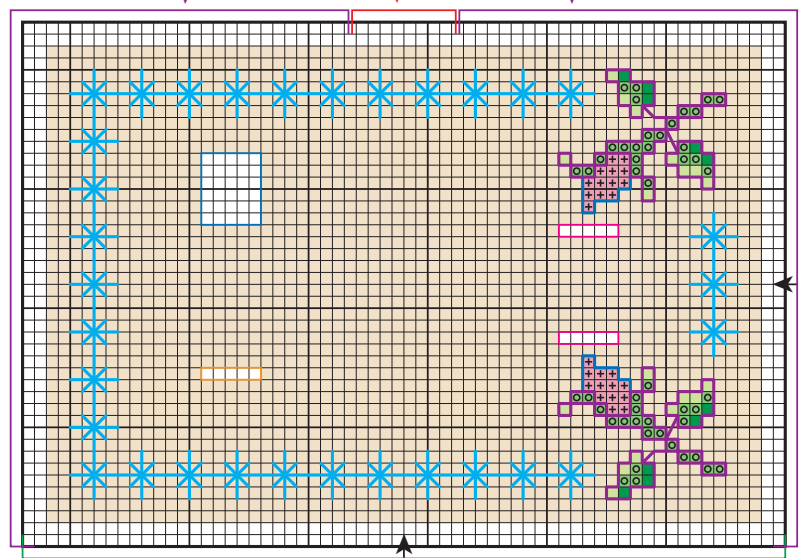
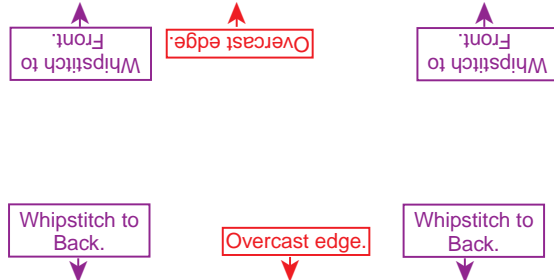
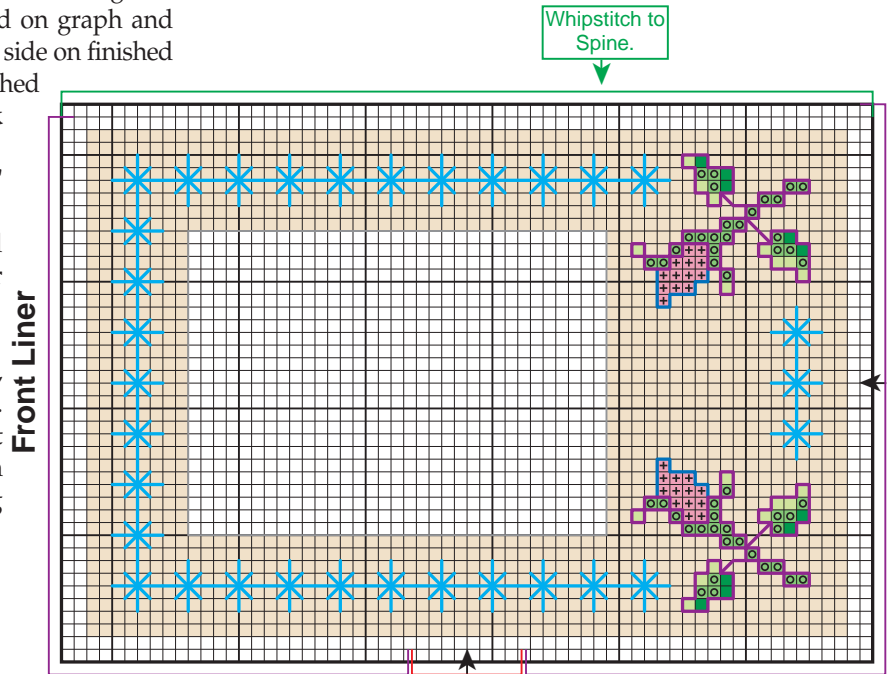
3: For Needle Pad, press 1/2" hem around muslin; place batting in center of muslin under hem. Slipstitch to Front Liner as indicated.

NOTE: From ribbon, cut two 10" lengths.

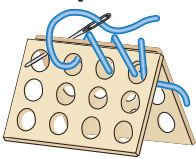
4: Using ecru floss, Overcast Front, Back, Front Liner and Back Liner pieces as indicated. Sew one end of ribbon to wrong side of Front at Overcast area. Repeat with remaining ribbon and Back. With wrong sides facing and using

ecru floss, Whipstitch Front and Front Liner pieces together as indicated. Repeat with Back and Back Liner pieces.

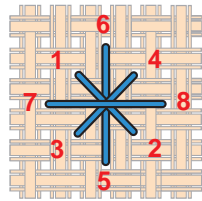
5: With wrong sides facing and using ecru floss, Whipstitch Spine and Spine Liner pieces together along short edges. Working through all thicknesses, Whipstitch Spine to Front and Back as indicated, forming Scissor Case. Tie ribbons into a bow as shown in photo. ❖



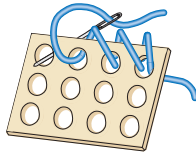
Whipstitch







Extended Smyrna Stitch












Overcast



Placement Guide

-  Handle Strap
-  Needle Pad
-  Point Strap
-  Velcro

X	B'st	DMC	ANCHOR	J.&P. COATS	KREINIK(#8)	COLORS
	#470	#267	#6010	Avocado Green Lt.		
	#471	#266	#6266	Avocado Green Very Lt.		
	#472	#253	#6253	Avocado Green Pale		
	#761	#1021	#3068	Salmon Lt.		
	#818	#23	#3281	Antique Rose Very Lt.		
	#937	#268	#6268	Black Avocado		
	#3712	#1023	#3071	Salmon Med.		
	#3777	#1015	#2339	Darkest Terra Cotta		
	Ecru	#387	#1002	Ecru	#002-HL	Gold